

**LEGEND**

- The Order Limits
  - 1km Study Area
  - Noise Sensitive Receptor (NSR)
  - Proposed PCC Site
- Predicted Operational Specific Sound Level Contour (dB LAeq,T)  
Mitigated Scenario
- <=30
  - <=35
  - <=40
  - <=45
  - <=50
  - <=55
  - <=60
  - <=65
  - <=70
  - <=75
  - <=80

**NOTES**

Reproduced from Ordnance Survey digital map data © Crown copyright 2021. All rights reserved. Licence number 0100031673.

Noise level predictions in this figure based on Indicative Layout of the Proposed PCC Site – see Figure 4.1 and the methodologies outlined in Chapter 9: Noise and Vibration and Appendix 9B: Operational Noise Information for a mitigated scenario.

**ISSUE PURPOSE**

ENVIRONMENTAL STATEMENT

**PROJECT NUMBER**

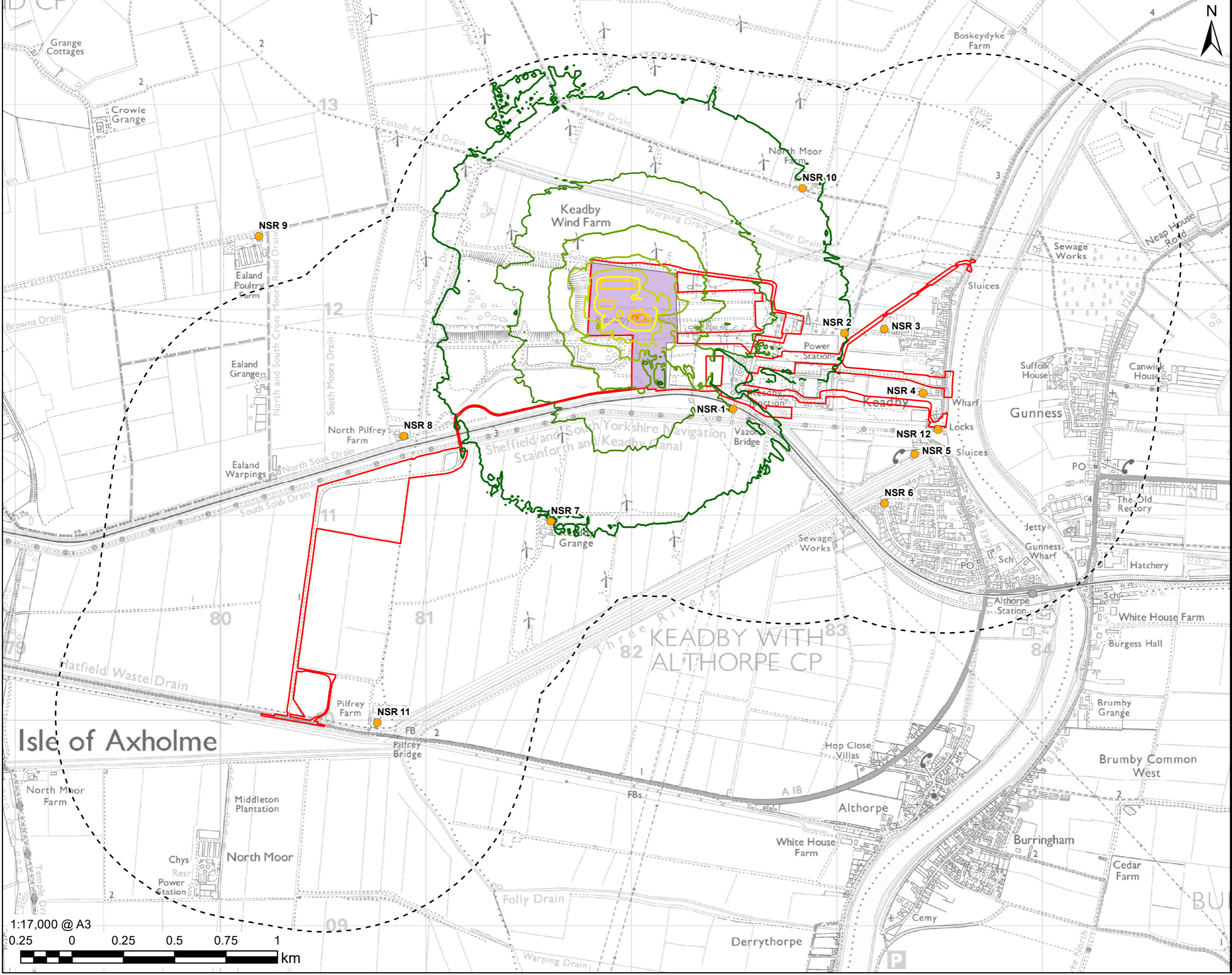
60625943

**SHEET TITLE**

Operational Noise Level Predictions (Mitigated Scenario)

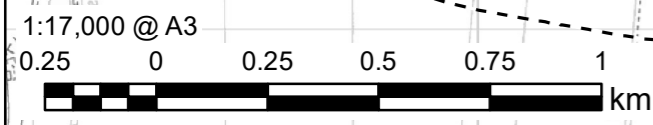
**SHEET NUMBER**

Figure 9.3b



Revision: 01 Drawn: AW Checked: TD Approved: SE Date: 13/05/2021

Filename: K:\07 CAD & GIS\02\_Maps\Environmental Statement\Acoustics\K\_ES\_Fig\_9.3b\_Operational\_Noise\_Levels\_Mitigated\_A3\_20210513\_R01.mxd



This drawing has been prepared for the use of AECOM's client. It may not be used, modified, reproduced or relied upon by third parties, except as signed by AECOM or as required by law. AECOM accepts no responsibility, and disclaims any liability whatsoever, to any party that uses or relies on this drawing without AECOM's express written consent. Do not scale this document. All measurements must be obtained from the stated dimensions.